

SAMSUNG

LED TV

user manual

SERIES 6

Figures and illustrations in this User Manual are provided for reference only and may differ from actual product appearance. Product design and specifications may be changed without notice.

Still image warning

Avoid displaying still images (like jpg picture files) or still image element (like TV programme logo, panorama or 4:3 image format, stock or news bar at screen bottom etc.) on the screen. Constant displaying of still picture can cause ghosting of LED screen, which will affect image quality. To reduce risk of this effect, please follow below recommendations:

- Avoid displaying the same TV channel for long periods.
- Always try to display any image on full screen, use TV set picture format menu for best possible match.
- Reduce brightness and contrast values to minimum required to achieve desired picture quality, excessive values may speed up the burnout process.
- Frequently use all TV features designed to reduce image retention and screen burnout, refer to proper user manual section for details.

Securing the Installation Space

Keep the required distances between the product and other objects (e.g. walls) to ensure proper ventilation.

Falling to do so may result in fire or a problem with the product due to an increase in the internal temperature of the product.

When using a stand or wall-mount, use parts provided by Samsung Electronics only.

If you use parts provided by another manufacturer, it may result in a problem with the product or an injury due to the product falling.

The appearance may differ depending on the product.

Be careful when you contact the TV because some parts can be somewhat hot.

Installation with a stand. Installation with a wall-mount.



10 cm

10 cm

10 cm

10 cm

10 cm

10 cm

10 cm

10 cm

10 cm

10 cm

10 cm

10 cm

10 cm

10 cm

10 cm

10 cm

10 cm

10 cm

10 cm

10 cm

10 cm

10 cm

10 cm

10 cm

10 cm

10 cm

10 cm

10 cm

10 cm

10 cm

10 cm

10 cm

10 cm

10 cm

10 cm

10 cm

10 cm

10 cm

10 cm

10 cm

10 cm

10 cm

10 cm

10 cm

10 cm

10 cm

10 cm

10 cm

10 cm

10 cm

10 cm

10 cm

10 cm

10 cm

10 cm

10 cm

10 cm

10 cm

10 cm

10 cm

10 cm

10 cm

10 cm

10 cm

Contact SAMSUNG WORLD WIDE

If you have any questions or comments relating to Samsung products, please contact the SAMSUNG customer care centre.

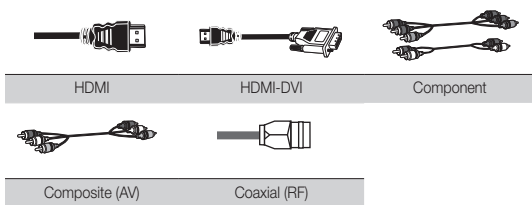
Country	Customer Care Centre ☎	Web Site
AUSTRALIA	1300 362 603	www.samsung.com/au/support
NEW ZEALAND	0800 SAMSUNG (0800 726 786)	www.samsung.com/nz/support
CHINA	400-810-5858	www.samsung.com/cn/support
HONG KONG	(852) 3698 4698	www.samsung.com/hk_en/support (Chinese)
INDIA	1800 3000 8282 - Toll Free 1800 266 8282 - Toll Free	www.samsung.com/in/support
INDONESIA	0800112888 021-56991777	www.samsung.com/id/support
JAPAN	0120-327-527	www.samsung.com/jp/support
MALAYSIA	1800-88-9999	www.samsung.com/my/support
PHILIPPINES	1-800-10-7267864 [PLDT] 1-800-8-7267864 (Globe landline and Mobile) 02-4222111 [Other landline]	www.samsung.com/ph/support
SINGAPORE	1800-SAMSUNG (726-7864)	www.samsung.com/sg/support
THAILAND	0-2689-3232, 1800-29-3232	www.samsung.com/th/support
TAIWAN	0800-32-9999	www.samsung.com/tw/support
VIETNAM	1 800 588 889	www.samsung.com/vn/support
GEORGIA	0-800-555-555	www.samsung.com/support
ARMENIA	0-800-05-555	www.samsung.com/support
AZERBAIJAN	088-55-55-555	www.samsung.com/support
UZBEKISTAN	8-10-800-500-55-500	www.samsung.com/support
KYRGYZSTAN	8-10-800-500-55-500	www.samsung.com/kz_ru/support
TADJIKISTAN	8-10-800-500-55-500	www.samsung.com/support
MONGOLIA	+7-800-555-55-55	www.samsung.com/support
BELARUS	810-800-500-55-500	www.samsung.com/support
MOLDOVA	0-800-614-40	www.samsung.com/support
ALGERIA	021 36 11 00	www.samsung.com/n_africa/support
PAKISTAN	0800-Samsung (72678)	www.samsung.com/pk/support
TUNISIA	80-1000-12	www.samsung.com/n_africa/support

Getting Started

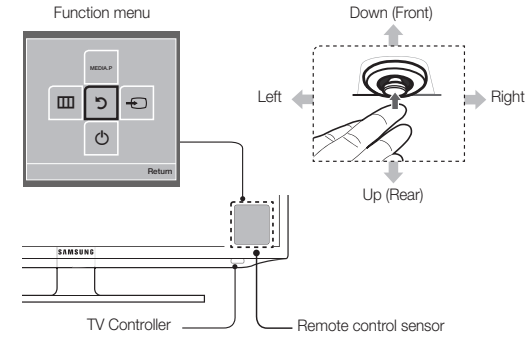
Accessories

- Remote Control & Batteries (AAA x 2)
- Owner's Instructions
- Warranty Card / Safety Guide (Not available in some locations)
- Holder-Wire stand
- Power Cord

Input Cables (Sold Separately)



TV Controller (Panel Key)



Power on	Turns the TV on by pressing the controller in standby mode.
Adjusting the volume	Adjusts the volume by moving the controller from side to side when the power is on.
Selecting a channel	Selects a channel by moving the controller up and down when the power is on.
Using the function menu	Press the controller when the power is on, then the function menu screen appears. If you press it again, the function menu screen disappears.
Using the Menu (M) button	Press the Menu (M) button by moving the controller in the function menu screen. The OSD(On Screen Display) of your TV's feature appears.
Selecting the Source (S) button	Selects the Source (S) button by moving the controller in the function menu screen. The Source List screen appears.
Selecting the Media Play button	Selects the MEDIA P button by moving the controller in the function menu screen. The Media Play main screen appears.
Power Off (O) button	Selects the Power Off (O) button to turn the TV off by moving the controller in the function menu screen.

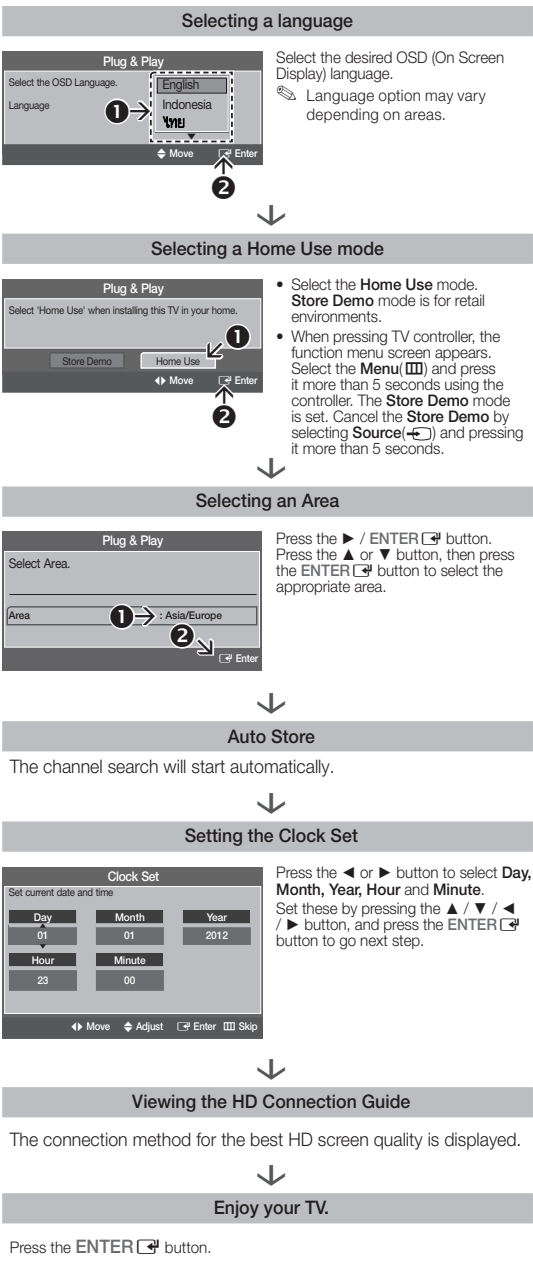
Exits the menu when pressing the controller more than 1 second.

When selecting the function by moving the controller to the up/down/left/right directions, be sure not to press the controller. If you press it first, you cannot operate it to move the up/down/left/right directions.

Plug & Play

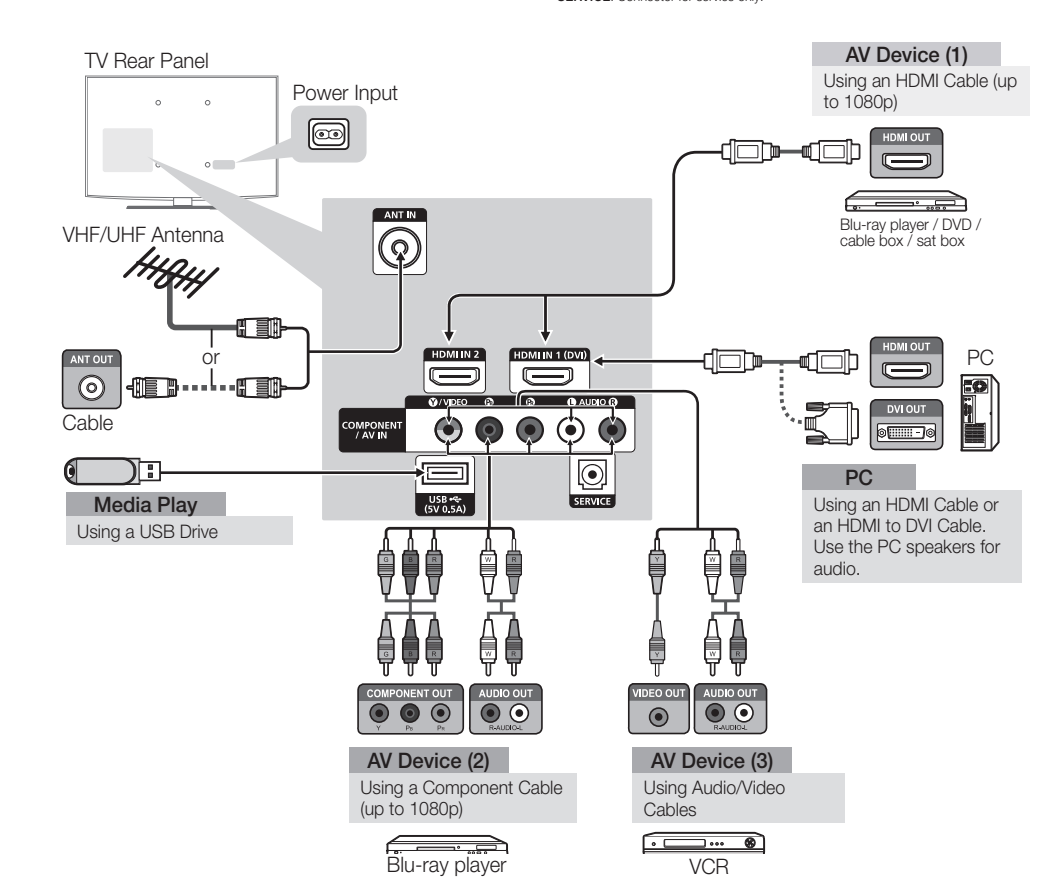
When you turn the TV on for the first time, a sequence of on-screen prompts will assist in configuring basic settings. Press the **POWER** button. **Plug & Play** is available only when the input source is set to TV.

Connecting the power cord and antenna. (refer to 'Connections')



Connections

- For better picture and audio quality, connect to a digital device using an HDMI cable.
- The picture may not display normally (if at all) or the audio may not work if an external device that uses an older version of HDMI mode is connected to the TV. In such a problem occurs, ask the manufacturer of the external device about the HDMI version and, if out of date, request an upgrade.
- Be sure to purchase a certified HDMI cable. Otherwise, the picture may not display or a connection error may occur.
- PC/DVI AUDIO IN input are not supported.
- DIGITAL AUDIO OUT(OPTICAL) is not supported.
- For HDMI/DVI cable connection, you must use the HDMI IN 1(DVI) jack.
- Connecting through the HDMI cable may not be supported depending on the PC.
- If an HDMI to DVI cable is connected to the HDMI IN 1(DVI) port, the audio does not work.
- **SERVICE**: Connector for service only.



Changing the Input Source

Source List

Use to select TV or other external input sources such as DVD / Blu-ray players / cable box / STB satellite receiver connected to the TV.

1. Press the **SOURCE** button.
 2. Select a desired external input source.
- **TV / AV / Component / HDMI1/DVI / HDMI2**
- You can only choose external devices that are connected to the TV. In the **Source List**, connected inputs will be highlighted.

How to use Edit Name

Edit Name lets you associate a device name to an input source. To access **Edit Name**, press the **TOOLS** button in **Source List**. The following selections appear under **Edit Name**:

Sound Menu

Mode [TOOLS]

- **Standard**: Selects the normal sound mode.
- **Music**: Emphasizes music over voices.
- **Movie**: Provides the best sound for movies.
- **Clear Voice**: Emphasizes voices over other sounds.
- **Amplify**: Increase the intensity of high-frequency sound to allow a better listening experience for the hearing impaired.

Equalizer

- (standard sound mode only)
- **Balance**: Adjusts the balance between the right and left speaker.
 - **100Hz / 300Hz / 1kHz / 3kHz / 10kHz (Bandwidth Adjustment)**: Adjusts the level of specific bandwidth frequencies.
 - **Reset**: Resets the equalizer to its default settings.

SRS TruSurround HD [TOOLS]

(standard sound mode only)

This function provides a virtual 5.1 channel surround sound experience through a pair of speakers using HRTF (Head Related Transfer Function) technology.

Auto Volume

Because each broadcasting station has its own signal conditions, the volume may fluctuate each time channel is changed. This feature lets you automatically adjust the volume of the desired channel by lowering the sound output when the modulation signal is high or by raising the sound output when the modulation signal is low.

Selecting the Sound Mode [TOOLS]

When you set to **Dual I-II**, the current sound mode is displayed on the screen.

	Audio Type	Dual I-II	Default
A2 Stereo	Mono	Mono	Automatic change
	Stereo	Stereo ↔ Mono	Automatic change
	Dual	Dual I ↔ Dual II	Dual I
NICAM Stereo	Mono	Mono	Automatic change
	Stereo	Mono ↔ Stereo	Automatic change
	Dual	Mono ↔ Dual I	Dual I

- If the stereo signal is weak and an automatic switching, occurs, then switch to the mono.
- Only activated in stereo sound signal.
- This function is available for all input sources.

Sound Reset

- **Reset All**: Reset all sound settings to the factory defaults.

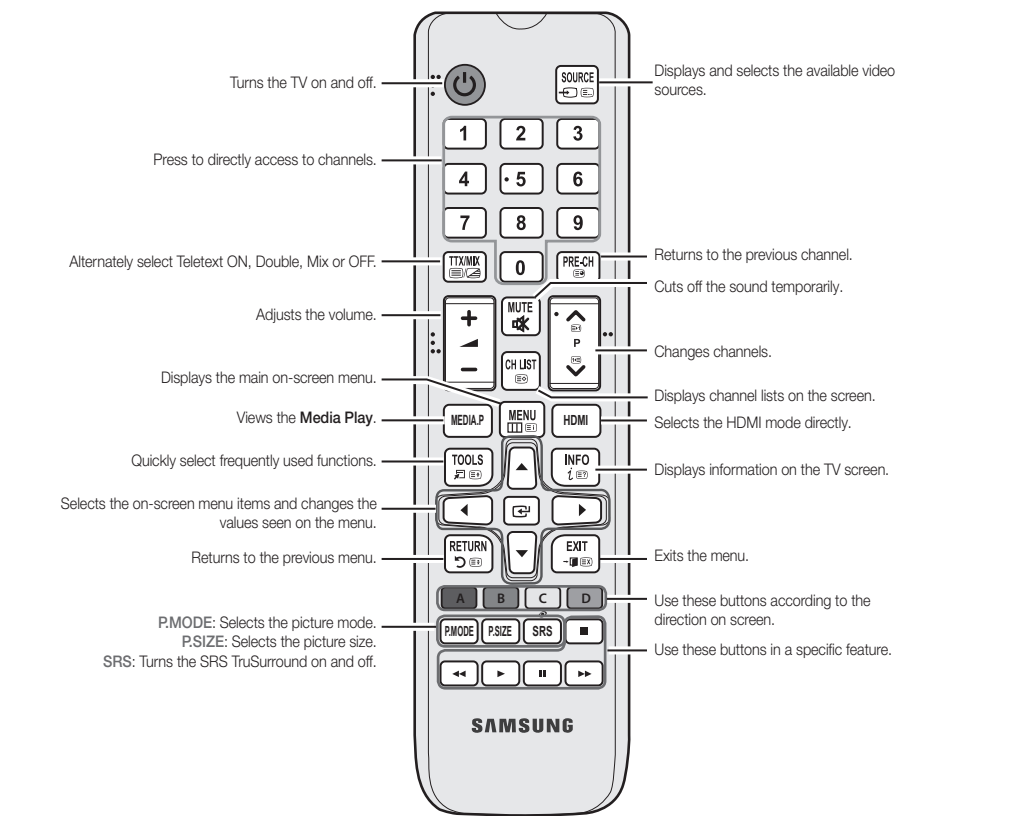
Language

Set the menu language.

- Select Language and press the **ENTER** button.

Remote Control

This remote control has Braille points on the Power, Channel, and Volume buttons and can be used by visually impaired persons.

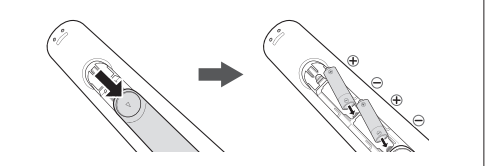


Display Modes (HDMI/DVI Input)

Optimal resolution is 1920 X 1080 @ 60 Hz.

Mode	Resolution	Horizontal Frequency (Hz)	Vertical Frequency (Hz)	Pixel Clock Frequency (MHz)	Sync Polarity (H/V)
IBM	640 x 360	31.469	70.086	25.175	+/-
	720 x 480	31.469	70.087	28.322	-/-
	840 x 480	35.000	69.667	30.240	-/-
MAC	832 x 624	49.726	74.551	57.284	-/-
	1152 x 870	68.681	75.062	100.000	-/-
	640 x 480	31.469	59.940	25.175	+/-
VESA DMT	640 x 480	37.861	72.809	31.500	-/-
	640 x 480	37.500	75.000	31.500	-/-
	800 x 600	37.879	60.317	40.000	+/-
VESA DMT	800 x 600	48.077	72.188	50.000	+/-
	800 x 600	48.875	75.000	49.500	+/-
	1024 x 768	49.383	60.004	66.000	+/-
VESA DMT	1024 x 768	56.476	70.069	75.000	-/-
	1024 x 768	60.023	75.029	78.750	+/-
	1280 x 800	49.702	59.810	83.500	-/-
VESA DMT	1280 x 1024	63.581	60.020	108.000	+/-
	1280 x 1024	79.976	75.025	135.000	+/-
	1368 x 768	47.712	59.790	85.500	+/-
VESA DMT	1440 x 900	55.335	59.887	106.500	+/-
	1600 x 900P60	60.000	60.000	108.000	+/-
	1680 x 1050	65.290	59.954	146.250	-/-
VESA DMT	1920 x 1080	67.500	60.000	148.500	+/-

Installing batteries (Battery size: AAA)



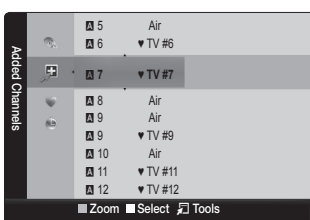
- Use the remote control within 23 feet from TV.
- Bright light may affect the performance of the remote control. Avoid using nearby special fluorescent light or neon signs.
- The product colour and shape may vary depending on the model.

Channel Menu

Seeing Channels

Channel List

Select a channel in the **All Channels**, **Added Channels**, **Favourites** or **Programmed** screen by pressing the **▲** / **▼** buttons, and pressing the **ENTER** button. Then you can watch the selected channel.



- **All Channels**: Shows all currently available channels.
- **Added Channels**: Shows all added channels.
- **Favourites**: Shows all favourite channels.
- **Programmed**: Shows all currently reserved Programmes.
- Using the remote control buttons with the **Channel List**.
- Green (**Zoom**): Enlarges or shrinks a channel number.
- Yellow (**Select**): Selects multiple channel lists. Select desired channels and press the Yellow button to set all the selected channels at the same time. The **✓** mark appears to the left of the selected channels.
- **Tools**: Displays the **Channel List** option menu. (The Options menu may differ depending on the situation.)

Channel Status Display icons

Icons	Operations
✓	A channel selected.
♥	A channel set as a favourites.
🔒	A locked channel.
🕒	A reserved programme.

Retuning Channels

Area

You can change the desired area.

Auto Store

(depending on the country)

Scans for a channel automatically and stores in the TV.

Automatically allocated programme numbers may not correspond to actual or desired programme numbers. If a channel is locked, the PIN input window appears.

Manual Store

Scans for a channel manually and stores in the TV.

- If a channel is locked, the PIN input window appears.
- According to channel source, **Manual Store** may be supported.
- **Programme, Colour System, Sound System, Channel, Search, Store**: If there is abnormal sound or no sound, reset the sound standard required.
- **Channel mode**
 - **P** (Programme): When tuning is complete, the broadcasting stations in your area have been assigned to position numbers from P0 to P99. You can select a channel by entering the position number in this mode.
 - **C** (aerial channel mode) / **S** (cable channel mode): These two modes allow you to select a channel by entering the assigned number for each aerial broadcasting station or cable channel.

Channel List Option Menu [TOOLS]

Set each channel using the **Channel List** menu options (**Add/Delete**, **Add to Favourites/Delete from Favourites**, **Timer Viewing**, **Lock/Unlock**, **Edit Channel Name**, **Sort**, **Select All/Deselect All**, **Auto Store**). Option menu items may differ depending on the channel status.

Set each channel using the **Channel List** menu options. Option menu items may differ depending on the channel status.

- **Add / Delete**: Delete or add a channel to display the channels you want.
 - All deleted channels will be shown on the **All Channels** menu.
 - A gray-Coloured channel indicates the channel has been deleted.
 - The **Add** menu only appears for deleted channels.
 - Delete a channel from the **Added Channels** or **Favourites** menu in the same manner.
- **Add to Favourites / Delete from Favourites** [TOOLS]: Set channels you watch frequently as favourites.
- **Timer Viewing**: You can set a desired channel to be displayed automatically at the set time; even when you are watching another channel. Set the current time first to use this function.
- **Edit Channel Name**: Assign your own channel name.
- **Sort**: This operation allows you to change the programme numbers of the stored channels. This operation may be necessary after using the auto store.
- **Lock / Unlock**: Delete a channel so that the channel cannot be selected and viewed.
 - This function is available only when the **Channel List** is set to **On**.
 - The PIN input screen appears. Enter your 4-digit PIN, the default of which is "0-0-0-0". Change the PIN using the **Change PIN** option.
- **Select All / Deselect All**: You can select or deselect all channels in the channel list.
- **Auto Store**: Scans for a channel automatically and stores in the TV.

Channel Mode

Channels will be switched within the favourite or memorised channel list.

- **Added Channels**: Shows all added channels.
- **Favourite Ch.**: Shows all favourite channels.

Fine Tune

If the reception is clear, you do not have to fine tune the channel, as this is done automatically during the search and store operation. If the signal is weak or distorted, fine tune the channel manually.

- Fine tuned channels that have been saved are marked with an asterisk "*" on the right-hand side of the channel number in the channel banner.
- To reset the fine-tuning, select **Reset**.

Picture Menu

Mode [TOOLS]

- Select your preferred picture type.
- **Dynamic**: Suitable for a bright room.
- **Standard**: Suitable for a normal environment.
- **Movie**: Suitable for watching movies in a dark room.

Your television has several setting options for picture quality control.

Backlight / Contrast / Brightness / Sharpness / Colour / Tint (G/R)

Advanced Settings (available in **Standard** / **Movie** mode)

Compared to previous models, new Samsung TVs have a more precise picture.

-

Using the Media Play Menu



- Press the MENU button. Press the ▲ or ▼ button to select **Applications**, then press the ENTER [↵] button.
- Press the ▲ or ▼ button to select **Media Play (USB)**, then press the ENTER [↵] button.
- Press the ◀ or ▶ button to select an icon (**Videos**, **Music**, **Photos**, **Settings**), then press the ENTER [↵] button.
 - It might not work properly with unlicensed multimedia files.
 - If you want to view detailed information of the file or connected device, press **TOOLS** button in the file list, and then select **Detailed Information** or **Device Information**.
- Need-to-Know List before using **Media Play (USB)**
- The file system supports NTFS (Read Only), FAT16 and FAT32.

- Certain types of USB Digital camera and audio devices may not be compatible with this TV.
- Media Play** only supports USB Mass Storage Class (MSC) devices. MSC is a Mass Storage Class Bulk-Only Transport device. Examples of MSC are Thumb drives and Flash Card Readers. Devices should be connected directly to the TV's USB port. USB HDD is not supported.

- Before connecting your device to the TV, please back up your files to prevent them from damage or loss of data. SAMSUNG is not responsible for any data file damage or data loss.

- A USB device that requires high power (more than 0.5A) may not be supported.

- Do not disconnect the USB device while it is loading.

- The higher the resolution of the image, the longer it takes to display on the screen.

- If a file is corrupted or the TV does not support the file type, the "Not Supported File Format." message appears.
- If a USB extension cable is used, the USB device may not be recognized or the files on the device may not be read.

- The TV cannot play MP3 files with DRM that have been downloaded from a for-pay site. Digital Rights Management (DRM) is a technology that supports the creation, distribution, and management of digital content in an integrated and comprehensive way, including protecting the rights and interests of content providers, preventing illegal copying of contents, and managing billings and settlements.
- PTP device is not supported.

- If an over-power warning message is displayed while you are connecting or using a USB device, the device may not be recognized or may malfunction.
- If the TV has no input during the time set in **Auto Protection Time**, the Screensaver will run.
- The power-saving mode of some external hard disk drives may be released automatically when you connect them to the TV.
- If a USB device connected to the TV is not recognized, the list of files on the device is corrupted, or a file in the list is not played, connect the USB device to a PC, format the device, and check the connection.

- If a file you deleted from the PC is still found when you run **Media Play**, use the "Empty the Recycle Bin" function on the PC to permanently delete the file.

- Photos** only supports sequential jpeg format.
- The scene search and thumbnail functions are not supported in the **Videos**.
- If the number of files and folders saved on a USB storage device is approximately over 4000, the files and folders may not appear and some folders may not be opened.
- The maximum displayed number of files, including sub folders, in one folder of USB storage device is 2000.
- The media may not be playing smoothly when using the device lower than USB 2.0.

Videos



- Press the ◀ or ▶ button to select **Videos**, then press the ENTER [↵] button in the **Media Play** menu.
- Press the ◀▶/▲/▼ button to select the desired video in the file list.
 - The selected file is displayed on the top with its playing time.
 - If video time information is unknown, playing time and the progress bar are not displayed.
 - During video playback, you can search using the ◀ and ▶ button.
 - You can use [⏮] (REW) and [⏭] (FF) buttons during playback.
- Press the ENTER [↵] button or [▶] (Play) button.
 - In this mode, you can play movie clips contained in a game, but you cannot play the game itself.

Supported Subtitle Formats

- External

Name	File extension
MPEG-4 timed text	.txt
SAMI	.sami
SubRip	.srt
SubViewer	.sub
Micro DVD	.sub or .txt
SubStation Alpha	.ssa
Advanced SubStation Alpha	.ass

- Internal

Name	Container	Format
SubStation Alpha	MKV	Text Format
Advanced SubStation Alpha	MKV	Text Format
SubRip	MKV	Text Format
MPEG-4 Timed text	MP4	Text Format

Supported Video Formats

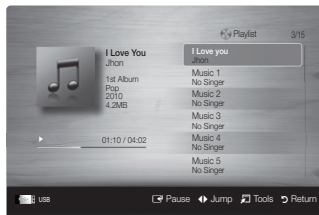
File Extension	Container	Video Codec	Audio	Resolution	Frame rate/fps	Bit rate/bps	Audio Codec
*.mp4	MP4	H.263, H.264, H.265, H.266	AVC	1920x1080	6-30	30Mbps	MP3 / AAC / AC3
		H.264	AVC	1920x1080	6-30	30Mbps	MP3 / AAC / AC3
		MPEG2	MP2	1920x1080	6-30	10Mbps	MP3 / AAC / AC3
		H.264	AVC	1920x1080	6-30	30Mbps	MP3 / AAC / AC3 / LPCM / ADPCM / DTS Core
*.avi	ASF	MPEG2	MP2	1920x1080	6-30	30Mbps	MP3 / AAC / AC3
		MPEG4 SP / ASP	MP4	1920x1080	6-30	30Mbps	MP3 / AAC / AC3 / LPCM / ADPCM / DTS Core
		MPEG4 SP / ASP	MP4	1920x1080	6-30	30Mbps	MP3 / AAC / AC3 / LPCM / ADPCM / DTS Core
		MPEG4 SP / ASP	MP4	1920x1080	6-30	30Mbps	MP3 / AAC / AC3 / LPCM / ADPCM / DTS Core
*.ts	TS	MPEG2	MP2	1920x1080	6-30	30Mbps	MP3 / AAC / AC3
		H.264 SP / MP / HP	AVC	1920x1080	6-30	30Mbps	MP3 / AAC / AC3 / LPCM / ADPCM / DTS Core
		MPEG2	MP2	1920x1080	24/25/30	30Mbps	MP3 / AAC / AC3
		MPEG2	MP2	1920x1080	24/25/30	30Mbps	MP3 / AAC / AC3
*.m2ts	PS	H.264 SP / MP / HP	AVC	1920x1080	6-30	30Mbps	MP3 / AAC / AC3
		MPEG4 SP / ASP	MP4	1920x1080	6-30	30Mbps	MP3 / AAC / AC3
		MPEG4 SP / ASP	MP4	1920x1080	6-30	30Mbps	MP3 / AAC / AC3
		MPEG4 SP / ASP	MP4	1920x1080	6-30	30Mbps	MP3 / AAC / AC3
*.3gp	3GPP	MPEG4 SP / ASP	MP4	1920x1080	6-30	30Mbps	MP3
		H.264	AVC	1920x1080	6-30	30Mbps	MP3
		H.264	AVC	1920x1080	6-30	30Mbps	MP3
		Sorenson H.263	AVC	1920x1080	6-30	30Mbps	MP3

Other Restrictions

- NOTE**
- Video content will not play, or not play correctly, if there is an error in the content or the container.
- Sound or video may not work if the contents have a standard bit rate/ frame rate above the compatible Frame/sec listed in the table above.
- If the Index Table is in error, the Seek (Jump) function is not supported.
- The menu may take longer to appear if the video's bit rate exceeds 10Mbps.
- Video content can not be played, if there are many contents in one file.

Video Decoder
Supports up to H.264, Level 4.1 H.264 P/M / ASO / RS, VC1 SP / MP / AP / L4 and AVCHD are not supported. MPEG4 SP, ASP
Below 1280 x 720: 30 frame max Above 1280 x 720: 30 frame max H.263 is not supported. CMC is not supported.
Audio Decoder
Supports up to WMA7, 8, 9 STD, 9 PRO, 10 PRO WMA 9 PRO and WMA 10 PRO support 5.1 channel. (LBR mode of WMA Pro is not supported)
WMA Lossless is not supported.

Music



- Press the ◀ or ▶ button to select **Music**, then press the ENTER [↵] button in the **Media Play** menu.
- Press the ◀▶/▲/▼ button to select the desired Music in the file list.
 - During music playback, you can search using the ◀ and ▶ button.
 - [⏮] (REW) and [⏭] (FF) buttons do not function during play.
- Press the ENTER [↵] button or [▶] (Play) button.
 - Only displays the files with MP3 and PCM file extension. Other file extensions are not displayed, even if they are saved on the same USB device.
 - If the sound is abnormal when playing MP3 files, adjust the **Equalizer** in the **Sound** menu. (An over-modulated MP3 file may cause a sound problem.)

Photos



- Press the ◀ or ▶ button to select **Photos**, then press the ENTER [↵] button in the **Media Play** menu.
- Press the ◀▶/▲/▼ button to select the desired photo in the file list.
- Press the ENTER [↵] button or [▶] (Play) button.
 - NOTE**
 - While a photo list is displayed, press the [▶] (Play) / ENTER [↵] button on the remote control to start the slide show.
 - All files in the file list section will be displayed in the slide show.
 - During the slide show, files are displayed in order.
 - During the slide show, you can adjust the slide show speed using [⏮] (REW) or [⏭] (FF) button.
 - You can move to other file using ◀ or ▶ button.
 - Press **TOOLS** button and select **Background Music**. Music files can be automatically played during the Slide Show if the **Background Music** is set to **On**.
 - The **Mode** in **Background Music** cannot be changed until the BGM has finished loading.

Supported Photo Formats

Image	Photo	Resolution
JPEG	Basic-line	15360 x 8704
	Progressive	1024 x 768

Other Restrictions

- CMYK, YCCOK Colour space JPEG are not supported.

Playing Multiple Files

■ Playing selected video/music/photo files

- Press the Yellow button in the file list to select the desired file.
- Repeat the above operation to select multiple files.

- NOTE**
- The ✓ mark appears to the left of the selected files.
- To cancel a selection, press the Yellow button again.
- To deselect all selected files, press the **TOOLS** button and select **Deselect All**.
- Press the **TOOLS** button, and then select **Play Selected Contents**.

■ Playing the video/music/photo file group

While a file list is displayed, move to any file in desired group.

Media Play - Additional Functions

■ Videos/Music/Photos Play Option menus

When playing a file, press the **TOOLS** button.

Category	Operation	Videos	Music	Photos
Title	You can move the other file directly.	✓		
Repeat Mode	You can play movie and music files repeatedly.	✓	✓	
Picture Size	You can adjust the picture size to your preference.	✓		
Picture Mode	You can adjust the picture setting.	✓		✓
Auto Motion Plus	You can adjust the motion in fast moving scenes.	✓		
Sound Mode	You can adjust the sound setting.	✓	✓	✓
Subtitle Settings	You can play the video with Subtitles. This function only works if the subtitles are the same file name as the video. You can change the audio language if the video has more than one language.	✓		
Audio Language		✓		
Stop Slide Show / Start Slide Show	You can start or stop a Slide Show.			✓
Slide Show Speed	You can select the slide show speed during the slide show.			✓
Background Music	You can set and select background music when watching a Slide Show.			✓
Zoom	You can zoom into images in full screen mode.			✓
Rotate	You can rotate images in full screen mode.			✓
Information	You can see detailed information about the played file.	✓	✓	✓

Settings

Using the Setup Menu

- Information:** Select to view information on the connected device.

- DivX® Video On Demand:** Shows the registration code authorized for the TV. If you connect to the DivX web site and register with 10-digit registration code, you can download the VOD activation file. Once you play it using **Media Play**, the registration is completed.

- For more information on DivX® VOD, visit <http://vod.divx.com>.

Other Information

Installing the Wall Mount Kit

The wall mount kit (sold separately) allows you to mount the TV on the wall. For detailed information on installing the wall mount, see the instructions provided with the wall mount. Contact a technician for assistance when installing the wall mount bracket.

Samsung Electronics is not responsible for any damage to the product or injury to yourself or others if you elect to install the TV on your own.

Wall Mount Kit Specifications (VESA)

The wall mount kit is not supplied, but sold separately. Install your wall mount on a solid wall perpendicular to the floor. When attaching to other building materials, please contact your nearest dealer. If you install the TV on a ceiling or slanted wall, it may fall and result in severe personal injury.

NOTE

- Standard dimensions for wall mount kits are shown in the table below.

- When purchasing our wall mount kit, a detailed installation manual and all parts necessary for assembly are provided.

- Do not use screws that do not comply with the VESA standard screw specifications.

- Do not use screws longer than the standard dimension, as they may cause damage to the inside of the TV set.

- For wall mounts that do not comply with the VESA standard screw specifications, the length of the screws may differ depending on the wall mount specifications.

- Do not fasten the screws too firmly. This may damage the product or cause the product to fall, leading to personal injury. Samsung is not liable for these kinds of accidents.

- Samsung is not liable for product damage or personal injury when a non-VESA or non-specified wall mount is used or the consumer fails to follow the product installation instructions.

- Do not mount the TV at more than a 15 degree tilt.

- Always have two people mount the TV on a wall.

Product Family	Model	VESA screw hole specs (A" B") in millimeters	Standard Screw	Quantity
LED-TV	UA60H6003	400 X 400	M8	4

Do not install your Wall Mount Kit while your TV is turned on. It may result in personal injury due to electric shock.

Securing the TV to the Wall

- Caution:** Pulling, pushing, or climbing onto the TV may cause the TV to fall. In particular, ensure that your children do not hang over or destabilize the TV, doing so may cause the TV to tip over, resulting in serious injuries or death. Follow all safety precautions provided on the included Safety Flyer. For added stability, install the anti-fall device for safety purposes, as follows.

- Lock the lock.
- These are general instructions. For exact instructions, see the User manual supplied with the locking device.
- The locking device has to be purchased separately.
- The location of the Kensington slot may be different depending on the TV model.

Troubleshooting

If you have any questions about the TV, first refer to this list. If none of these troubleshooting tips apply, please visit "www.samsung.com," then click on Support, or contact the call centre listed on the back-cover of this manual.

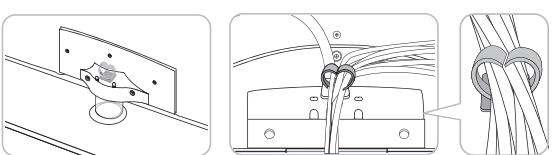
Problem	Possible Solution
Picture Quality	
The TV image does not look as good as it did in the store.	<ul style="list-style-type: none">If you have an analogue cable/set top box, upgrade to a digital set top box. Use HDMI or Component cables to deliver HD (high definition) picture quality. Cable/Satellite subscribers: Try HD stations from the channel line up. Antenna connection: Try HD stations after performing Auto tuning. Many HD channels are up scaled from SD(Standard Definition) contents. Adjust the Cable/Set top box video output resolution to 1080i or 720p. Make sure you are watching the TV at the minimum recommended distance based on the size and definition of the signal.
The picture is distorted: macroblock error, small block, dots, pixelization	<ul style="list-style-type: none">Compression of video contents may cause picture distortion especially in fast moving pictures such as sports and action movies. Low signal level or bad quality can cause picture distortion. This is not a TV issue. Mobile phones used close to the TV (cca up to 1m) may cause noise in picture on analogue and digital TV.
Colour is wrong or missing.	<ul style="list-style-type: none">If you're using a component connection, make sure the component cables are connected to the correct jacks. Incorrect or loose connections may cause colour problems or a blank screen.
There is poor colour or brightness.	<ul style="list-style-type: none">Adjust the Picture options in the TV menu. (go to Picture Mode / Colour / Brightness / Sharpness) Adjust Energy Saving option in the TV menu. (go to MENU → Setup → Eco Solution → Energy Saving) Try resetting the picture to view the default picture settings. (go to MENU → Picture → Picture Reset)
There is a dotted line on the edge of the screen.	<ul style="list-style-type: none">If the picture size is set to Screen Fit, change it to 16:9. Change cable/satellite box resolution.
The picture is black and white.	<ul style="list-style-type: none">If you are using an AV composite input, connect the video cable (yellow) to the Green jack of component input 1 on the TV.
When changing channels, the picture freezes or is distorted or delayed.	<ul style="list-style-type: none">If connected with a cable box, please try to reset the cable box. Reconnect the AC cord and wait until the cable box reboots. It may take up to 20 minutes. Set the output resolution of the cable box to 1080i or 720p.
Sound Quality	
There is no sound or the sound is too low at maximum volume.	<ul style="list-style-type: none">Please check the volume the of external device connected to your TV.
The picture is good but there is no sound.	<ul style="list-style-type: none">Set the Speaker Select option to TV Speaker in the sound menu. If you are using an external device, make sure the audio cables are connected to the correct audio input jacks on the TV. If you are using an external device, check the device's audio output option (ex. you may need to change your cable box's audio option to HDMI when you have a HDMI connected to your TV). If you are using a HDMI cable, a separate audio cable is required. If your TV has a headphone jack, make sure there is nothing plugged into it.
The speakers are making an inappropriate noise.	<ul style="list-style-type: none">Check the cable connections. Make sure a video cable is not connected to an audio input. For antenna or cable connections, check the signal strength. Low signal level may cause sound distortion.
No Picture, No Video	
The TV will not turn on.	<ul style="list-style-type: none">Make sure the AC power cord is securely plugged in to the wall outlet and the TV. Make sure the wall outlet is working. Try pressing the POWER button on the TV to make sure the problem is not the remote. If the TV turns on, refer to "The remote control does not work" below.
The TV turns off automatically.	<ul style="list-style-type: none">Ensure the Sleep Timer is set to Off in the Time menu. If your PC is connected to the TV, check your PC power settings. Make sure the AC power cord is plugged in securely to the wall outlet and the TV. When watching TV from an antenna or cable connection, the TV will turn off after 10 ~ 15 minutes if there is no signal.
There is no picture/video.	<ul style="list-style-type: none">Check cable connections (remove and reconnect all cables connected to the TV and external devices). Set your external devices' (Cable/Set top Box, DVD, Blu-ray etc) video outputs to match the connections to the TV input. For example, if an external device's output is HDMI, it should be connected to an HDMI input on the TV. Make sure your connected devices are powered on. Be sure to select the TV's correct source by pressing the SOURCE button on the TV remote.

Problem	Possible Solution
RF(Cable/Antenna) Connection	
The TV is not receiving all channels.	<ul style="list-style-type: none">Make sure the Antenna cable is connected securely. Please try Plug & Play (initial setup) to add available channels to the channel list. Go to MENU → Setup → Plug & Play (initial setup) and wait for all available channels to be stored. Verify the Antenna is positioned correctly.
The picture is distorted: macroblock error, small block, dots, pixelization	<ul style="list-style-type: none">Compression of video contents may cause picture distortion, especially on fast moving pictures such as sports and action movies. A low signal can cause picture distortion. This is not a TV issue.
PC Connection	
A "Mode Not Supported" message appears.	<ul style="list-style-type: none">Set your PC's output resolution so it matches the resolutions supported by the TV.
The video is OK but there is no audio.	<ul style="list-style-type: none">If you are using a HDMI connection, check the audio output setting on your PC.
Others	
The picture will not display in full screen.	<ul style="list-style-type: none">HD channels will have black bars on either side of the screen when displaying up scaled SD (4:3) contents. Black bars on the top and bottom will appear during movies that have aspect ratios different from your TV. Adjust the picture size options on your external device or TV to full screen.
The remote control does not work.	<ul style="list-style-type: none">Replace the remote control batteries with the poles (+/-) in the right direction. Clean the transmission window located on the top of the remote control. Try pointing the remote directly at the TV from 5-6 feet away.
The cable/set top box remote control does not turn the TV on or off, or adjust the volume.	<ul style="list-style-type: none">Programme the Cable/Set top box remote control to operate the TV. Refer to the Cable/Set top box user manual for the SAMSUNG TV code.
A "Mode Not Supported" message appears.	<ul style="list-style-type: none">Check the supported resolution of the TV, and adjust the external device's output resolution accordingly. Refer to resolution settings in this manual.
There is a plastic smell from the TV.	<ul style="list-style-type: none">This smell is normal and will dissipate over time.
TV is tilted to the right or left side.	<ul style="list-style-type: none">Remove the stand base from the TV and reassemble it.
There are difficulties assembling the stand base.	<ul style="list-style-type: none">Make sure the TV is placed on a flat surface. It is necessary to use magnetized screw driver if you cannot remove the screws from the TV.
The Channel menu is grey out (unavailable).	<ul style="list-style-type: none">The Channel menu is only available when the TV source is selected.
Your settings are lost after 5 minutes or every time the TV is turned off.	<ul style="list-style-type: none">If the TV is in the Store Demo mode, it will reset audio and picture settings every 5 minutes. Change the settings from Store Demo mode to Home Use mode in the Plug & Play (initial setup) procedure. Press the SOURCE button to select TV mode, go to MENU → Setup → Plug & Play (initial setup) → ENTER [↵].
You have intermittent loss of audio or video.	<ul style="list-style-type: none">Check the cable connections and reconnect them. Loss of audio or video can be caused by using overly rigid or thick cables. Make sure the cables are flexible enough for long term use. If mounting the TV to the wall, we recommend using cables with 90 degree connectors.
You see small particles when you look closely at the edge of the frame of the TV.	<ul style="list-style-type: none">This is part of the product's design and is not a defect.
There are recurrent picture/sound issues.	<ul style="list-style-type: none">Check and change the signal/source.
A reaction may occur between the rubber cushion pads on the base stand and the top finish of some furniture.	<ul style="list-style-type: none">To prevent this, use felt pads on any surface of the TV that comes in direct contact with furniture.

- This TFT LED panel uses a panel consisting of sub pixels which require sophisticated technology to produce. However, there may be a few bright or dark pixels on the screen. These pixels will have no impact on the performance of the product.

- You can keep your TV as optimum condition to upgrade the latest firmware on web site (samsung.com → Support → Downloads) by USB.

Assembling the Holder-Wire stand




Storage and Maintenance

- If you remove the attached sticker on the TV screen, clean the residues and then watch TV.

Do not spray water directly onto the product. Any liquid that goes into the product may cause a failure, fire, or electric shock.	Clean the product with a soft cloth dampened with in a small amount of water. Do not use a flammable liquid (e.g. benzene, thinner) or a cleaning agent.

Licence

SRS TheaterSound	TheaterSound, SRS and the  symbol are trademarks of SRS Labs, Inc. TheaterSound technology is incorporated under
----------------------------	--